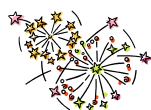




MERCIA MARINA  
http://www.merciamarina.co.uk/

# Mercia Mercury

January 2012 Issue : 36



## HAPPY NEW YEAR



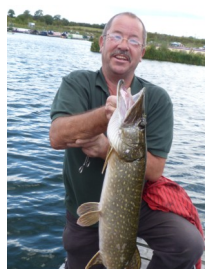
### TAI CHI QIGONG BEAT THE WINTER LETHARGY AND STAY HEALTHY

A nine-week course of tai chi/qigong lessons will start in January with a free introductory lesson followed by eight further lessons costing £5 per person per lesson. The course will be run by John Collinson, a qualified instructor of the British Health Qigong Association. Everyone welcome from Willington, Mercia Marina, Findern and surrounding area. Introductory lesson on Sunday 15 January at 6.30 pm in Findern Village Hall. Following lessons on following Sundays. Further details on posters displayed locally. To book a place contact John now on his mobile 07768 279583, or e-mail [johnfred5@hotmail.co.uk](mailto:johnfred5@hotmail.co.uk) or visit n/b Laura Beth on pontoon AA10 (Albatross) at Mercia.



### Mike Coates and the one that didn't get away!

Mike is a member of the newly-formed Wildlife Management Committee (see later in the Newsletter). He has a particular interest in the Marina's fish and wants to make sure that everyone remembers what 'best practice' fishing means. He had a look at the piece Ben did for the Newsletter back in September 2010 and reckons it's spot on ... so it's being reproduced here. He also says "Enjoy Your Fishing"!!



### Mercia's Fish

#### talking with Ben Johnson

Ben ('Wanapitei' on V Pontoon) has lived in the area for a number of years and was an early Marina moorer. He knows the marina's fish intimately. Rudd, Roach, Dace, Carp, Bream, Pike, Chubb, Perch and Gudgeon all live happily in our waters as a natural population ("although the big carp are probably remnants from the Trout Farm days"). We have, says Ben, a wonderfully healthy habitat for them; clean water, low traffic and with both deep and shallow areas providing the right environment for their individual species

needs. The gravel bed provides a great place for caddis flies and with millions of Bloodworms, a huge diversity of insects and many types of small fish, there is a bountiful larder for the larger fish!

If a moorer wants to fish he or she **must** have a rod licence. (Anyone over the age of 12 fishing in freshwater in England and Wales needs a full or concessionary rod licence [under 12's can fish off an adult's licence]). Licences (which are for one or two rods) can be for the full season, eight days or one day and can be bought at the Post Office or online.

With a valid licence, moorers can fish from their boats – but only from their boats. This is written in the moorers' contract. Fishing on the canal is prohibited unless you have a valid permit from the Angling Association controlling that particular stretch of water. Claymills -Shardlow is Pride of Derby Angling Association ([www.prideofderby.co.uk](http://www.prideofderby.co.uk)) Fishing success depends on patience – just sit and wait! And no time of day is necessarily better than any other. There is a wealth of wildlife to watch – other water creatures, the dragonflies and demoiselles and all the birds. The best local tackle supplier is Mullarkey's in Burton ([www.mullarkeys.co.uk](http://www.mullarkeys.co.uk)). But you don't need expensive equipment – a free line and a bit of bread can yield results and be great fun.

Ben is happy to give advice and tips to help people get started, so if you'd like to take him up on his offer, pop over and see him. Good and responsible fishing has accepted guidelines and Mercia Marina expects to see these being followed. There is a detailed 'Golden Rules Leaflet' which can be downloaded in .PDF from the Environment Agency ([www.environment-agency.gov.uk/homeandleisure/recreation/fishing/31487.aspx](http://www.environment-agency.gov.uk/homeandleisure/recreation/fishing/31487.aspx)).

The following are the key points:

- Use barbless hooks or, if predator fishing, either semi-barbed or pinch the barb down
- Do use a landing net for the larger fish
- With carp or any larger fish, use a protective mat or wet towel for weighing and disgorging
- All fish are to be returned carefully and gently
- Don't use live bait except maggots and worms
- Don't leave rods unattended – the marina's birds will almost certainly get tangled and hooked
- Beware of birds swimming onto your line or picking up surface baits
- If you see big fish on the marina edges in June/July, they will be spawning so avoid disturbing them

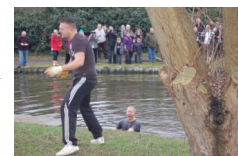
### New Year Tug-of-War

And now for something completely different:



Tuesday 27<sup>th</sup> December was the day for the Willington Tug-o-War across the canal?? Incredibly mild weather maybe encouraged more people out. It was between teams from the Dragon and the Rising Sun. At 2.30pm two motley crews took position just next to and opposite the winding hole. The whole of the far bank (We were on the grassy knoll next to the Elsan Point on the Dragon team side) was full of boaters and Willingtonites and the crowd got behind the teams and the tournament began. Of course everyone was waiting for a losing team member to be pulled in and cheered wildly when they were given what they wanted. There were 2 wins for the Dragon team (two dunks for the Rising Sun) and then the third and final tug was between the two landlords and one extra member on either side.

The final tug was awarded to the Rising Sun after the Dragon team all grabbed the rope to stop their landlord going in, which did not work as he was thrown in following a request from the umpire. He then volunteered and took quite an elegant dive in. Many then went off to the pub for a drink after – well obviously!



### TEMPORARY ROAD CLOSURES (Level Crossing Testing)

#### 1) B5008 ETWALL ROAD, WILLINGTON

22 January 2012, 07:00hrs - 14:00hrs.  
Etwall Road, Willington at a point 240 metres north of its junction with Findern Lane to a point 315 metres north of that junction (at level crossing).  
**Alternative Route:** Toyota Interchange, A38, A5123 The Castleway / The Green and vice versa.

#### 2) FINDERN LANE, WILLINGTON

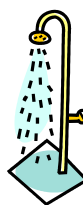
22:00hrs, 14 January 2012 to 14:00hrs, 15 January 2012.  
Findern Lane, Willington from a point 700 metres east of its junction with B5008 Canal Bridge to a point 725 metres east of that junction (extending over level crossing).  
**Alternative Route:** Willington Lane, Heath Lane, Main Street (Findern), The Green, Doles Lane, A38 Burton Road, B5008 Etwall Road, Findern Lane and vice versa.



Access will be maintained, whenever reasonably possible, on the affected length of road. The road will re-open as soon as the work is finished. This may be earlier than advertised.

Derbyshire County Council apologises for any inconvenience caused while work takes place. Anyone needing further information should ring Call Derbyshire on 08456 058 058.

## News Reminders



### Facilities' Blocks

Refurbishment of the Facilities' Blocks is underway. Please look out for notices about closure times for the Block you would normally use. You will need to use the other Blocks for a week or two.

### New Year New Fob

You need a new gate fob; your old one won't work any more. This is primarily for your benefit; the new key fobs are numbered and issued against names so will support site security.



### Calendar 2013

Get your cameras out for a 2013 Mercia Marina calendar. More information from the Office. And if you have good pictures from November and December from 2011, then send them to [info@merciamarina.co.uk](mailto:info@merciamarina.co.uk).



### Ukulele Workshop



Trevor is running a Ukulele workshop on Sunday evenings at the Willows' Tea Rooms. If you're interested and want to find out more, pop along on a Sunday evening at 6pm and ask Trevor.

### Boaters and Lodge Owners' Forum

The Boaters' and Lodge Owners' Forum next meets on 11 January. Talk to your Rep. if you want to find out more, attend as an Observer or have items you want raised.

#### FORUM REPRESENTATIVES

##### Finch, Grebe, Heron

Nigel Hunt NB MaryAnn

Email: [nbmaryann@gmail.com](mailto:nbmaryann@gmail.com)

##### Ibis, Jay, Kingfisher, Lapwing, Moorhen

Celia Kind of NB Bluebell.

Email [kind.celia@googlemail.com](mailto:kind.celia@googlemail.com)

##### Nuthatch, Owl, Peregrine, Quail

Lee Bartlett NB La Pirogue.

Email [k8max@orange.net](mailto:k8max@orange.net)

##### Redshank, Sandpiper, Teal, Upland Goose

Jane Bennett of NB Janeil.

Email [jane.bennett.1@hotmail.co.uk](mailto:jane.bennett.1@hotmail.co.uk)

##### Veery, Woodcock, Xantus, Yellowhammer:

Sandy Benthams of NB Swift.

(walk round, direct contact only)

##### Zebra Dove, Avocet, Blackbird, Albatross,

##### Bullfinch

Gordon Pilgrim of NB Edgewood Dirk.

Email [barmyboater@yahoo.co.uk](mailto:barmyboater@yahoo.co.uk)

##### Mercia Marina Lodges

Martin Stirling, Beech Lodge.

Email [mart.stirling@btinternet.com](mailto:mart.stirling@btinternet.com)

## Winterising Your Boat



This winter things look, at the moment, a lot better than last year! But a repeat of the full winterising check list is no bad thing. You

may need only to do some - it depends on how often you may be visiting and whether you'll be leaving a heater on board to swing into action if the temperatures start tumbling!

1. Check engine coolant
2. Grease exposed linkages
3. Grease battery main terminals
4. Grease stern gland
5. Leave batteries on charge or visit the boat every few weeks to run the engine
6. Make sure bilge pump works automatically or visit to check the bilge water level
7. Drain down hot water heaters and leave drain plugs out. Drain down instant hot water heaters such as Rinnai heaters. These are very prone to frost damage
8. Drain off as much water as possible from calorifier. Consider additional jacket in the engine space. No need to drain off central heating if protected with antifreeze.
9. If you haven't time to drain off the complete water system and calorifier, consider adding a non-toxic, non-tasting antifreeze such as Freeze Ban or Winter Ban.
10. If poss. close main water tank stopcock, pump out remaining water/turn pump off\*
11. Leave taps open, turn off water pump
12. Make sure the shower drain pump is run immediately before you leave
13. Leave fridge door open
14. Make sure ventilators are unobstructed and leave a window or two open a crack
15. Put poles, lines and roof equipment inside the boat (they will suffer if left out)
16. Turn off mains electric if you don't need it (excluding automatic bilge pump)
17. Pump-out / empty cassettes
18. Try and keep the diesel as full as possible to prevent water condensation in the tank
19. Install a couple of tube heaters or an oil-filled radiator on thermostatic switches
20. Talk to your neighbours, keep an eye on each other's boats, swap telephone numbers

\*Or only drain the main water tank to about half so there is always some on board for a quick cuppa during winter visits. Then turn off at stop cock next to tank before opening all taps and allowing system to drain down before you leave.

If you'd like help or advice ,talk to Justin at Aqua Narrowboats (01283701041)

## New News

### Mercia Marina Brass Plaques



Our very own brass plaques will be available from mid January. Ask in the Office for more details.

### Discount Cards

Our Discount Cards are to have dated stickers added. Please check with the Office and look at the list of local businesses who belong to this scheme.



### Storage Cabins



The Storage Cabins are now 'active' and have been well received. If you're interested in renting one, talk to the Office. Car Park works in the area will be completed shortly.

### Bank Repair

The bank repair to the canal side of bridge-hole has now been completed. Normally bridgeholes are piled but we went for a natural look. Unfortunately, wash from boats passing through the bridgehole eroded the bank. The repair was done by installing more wood spikes, rolls of stone with a membrane underneath and topped with coir-type rolls of plants. The work was undertaken by Water-Lines with the help of Stuart, Sam and Dave.

### Wildlife Management Committee

The Committee met for the first time on 12 December. Chaired by David Boddy, members include wildlife specialists (Mike and Rose Williams), moorers (Mike Coates, Steve and Sally Edis, Steve Frost, Jo James) and Robert Neff and Jules Aucott. Notes from that meeting are available from the Office in hard copy or by email. The key place and purpose of the Committee was agreed as follows. The Committee

- 1) recognises that all responsibility and decision-making remains with Mercia Marina and that the Marina's activity concerning wildlife may necessarily be limited by commercial, practical and planning consideration
- 2) supports the Wildlife Management Plan and wildlife protection. Discussions will focus on ways to engage staff, moorers, volunteers and visitors to help develop the marina's wildlife and environmental objectives
- 3) welcomes all people's ideas for improvement.