

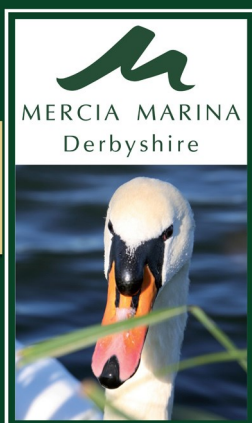


MERCIA MARINA
<http://www.merciamarina.co.uk/>

Mercia Mercury

October 2013 Issue : 57

Celebrating 5 years



Celebrating 5 years

2008 - 2013

On 6th September Mercia Marina celebrated its Fifth Anniversary since first opening. And what an enormous amount has changed since then!

When we opened we had about 40 boats, no trees, no wildlife, no businesses, mud everywhere and most critically no working sewage system.

The contrast with today is there to be seen. It is terrific for me to see how it has developed. Five years on we have around 550 boats in the marina, 13 holiday lodges, wonderful wildlife and a rapidly maturing landscape.

In addition to this we have great businesses on site: Midland Changers, The New and Used Boat Company, Aqua Narrow Boats, The Still Waters Shop, Avante Hire Boats and Willow Tree Tea Rooms.... And the sewage system works (at least usually!)

In mid November we are planning to embark on the first phase of The Peninsula Development with the Boardwalk scheme which is planned to provide a Bar/Bistro, a Farm Shop, 5 other shops and 4 offices. The opening of this is scheduled for next September.

None of this would have been possible without the help of so many people who are too numerous to name individually. However certain people have been critical to our success; our local Councillor, Martyn Ford, and the officers and members of South Derbyshire District Council who have given us tremendous support from the very beginning; our Partner and General Manager, Robert Neff who has been and remains crucial to the successful growth and development of the Marina through his hard work and dedication and our Mercia Office and Site Team who are so vital to the successful

day to day running of everything. Lucy, Kath and Stuart with their respective teams do a fantastic job. Finally our thanks to all the Volunteers who have given of their time and expertise in so many different ways to make a real difference.

But most of all, on our 5th Anniversary, I would like to thank you all, our Boaters, Lodge Owners and Businesses for the huge part that you have all played in supporting the Marina and building the thriving Mercia Community.

John Thornton

FESTIVAL & OPEN DAY

The weather was kind and the fireworks spectacular. Fairground stalls and rides, dance groups, choral groups and live bands vied for attention from the many hundreds of visitors and marina folk who came to enjoy the weekend.

Food stalls, a hog roast, bars with local beer and Popeye's icecream kept everyone well fed and watered! Photographs come courtesy of both Richard and Wynne.



An extra thank you to Midland Changers for their consistent support by producing the Newsletter hard copies every month and shipping it to Mercia.



FREAKY FRIDAY

20% Discount Day
Everything in Store and Online



8am until 8pm
In Store

12am until
Midnight For
Internet Orders!

No further discounts apply

BoatMON

(by Brian Clarke)

A comprehensive cost-effective remote control and monitoring system for your boat.

For the last two years I have been developing a control and monitoring system for my narrowboat moored at Mercia. Initially it was intended to remove the need for "winterising" by monitoring various temperatures and using the heating to keep everything above freezing. However as my background is electronics and IT the project has grown to become much more than this. The initial development version was run off a laptop but I am currently using a small micro-PC with custom software so the whole thing will fit into your lunchbox and still leave room for a sandwich.

I am looking to take this project from a one-off into a small 'production' batch of selected clients. These clients will receive substantial discounts and have close support during installation & development. I am looking for constructive feedback in terms of usage of current features and a wish-list for new features. I appreciate that there are other products on the market but in my opinion these are expensive, not particularly geared to inland cruisers and lack the comprehensive, extensible feature set that my product has.

If you are interested take a look at my website for more information than I am able to publish here, or contact me direct.

<http://theITboat.co.uk/>

Brian@TheITboat.co.uk



Basic Unit:

Monitor up to 4 temperature probes (e.g. room temperature, cold water pipe void, domestic hot water, external)

Monitor up to 4 voltages (standard unit is 2x 230vAC and 2 x 12vDC); e.g. Shore line, Domestic battery, starter battery)

No need to 'winterise' - automatic frost protection using diesel and/or electric convactor heater(s)

Essentially unlimited scheduling of heating in date/time/temperature format with 'everyday' option

Virtual Electricity meter.

Virtual Fuel Gauge.

All data/events logged and emailed to you.

(requires an Internet connection)

All data stored for 12 months (or more) and presented graphically in a web browser.

Remotely switch on/off up to 6 devices (low voltage or mains)

Options currently available:

Combined WiFi access point and cellular modem (3G) with external antenna for reliable boat-wide internet for all your current devices and remote access to BoatMON.

4 zone intruder alarm system – emails alerts to you and can optionally text activations to your mobile.

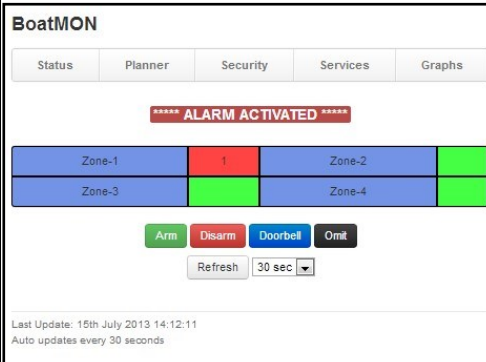
Additional temperature/voltage inputs.

Options in the pipeline:

Remotely operated day/night vision camera

GPS tracking

Any other suggestions?



Moth Surveying

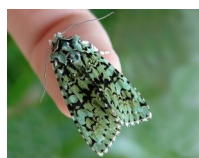


We surveyed on Friday night from 7.00 till 11.00. The moths are not harmed and are released the following morning.

Some lovely moths came visiting! The Canary Shouldered Thorn and the Merveille du Jour were probably the



most spectacular and they live on the Marina. Who knew!



Recycling

Why should we?

Many people

think that what they do will not make any difference. But we have! Since 2003, recycling in England has saved an estimated 30m tonnes of CO2 emissions and for that figure to make sense it equates to taking one third of our cars off the road for a year!

We have orange striped recycling bins in the Marina and bottle bins too next to the plain grey rubbish bins so I am asking you to use ALL these bins correctly by sorting your rubbish....

...All Bottles into bottle bins (not in plastic bags)

...Cardboard, paper (including envelopes and directories), cellophane, tins and plastic bottles into the orange striped bins

...Everything else that is domestic rubbish into the grey bins

It can be quite satisfying 'doing your bit'



and knowing that by sorting and throwing into the right containers you can be helping to extend the diminishing amount of space we have left in landfill sites. Some current 'Green House' facts on recycling and the environment:

∞ Each year UK households throw away over 29.1 million tonnes of waste, the same weight as 4.85 million male African Elephants! Or enough rubbish to fill the Albert Hall every two hours.

∞ The UK throws away 13 billion steel cans every year. Stacked on top of each other, you could make 3 piles of cans that would reach to the moon!

∞ Producing steel from recycled material saves 75% of the energy needed if steel were made from virgin material

∞ Every tonne of paper recycled saves 17 trees

∞ You can make 20 cans out of recycled material with the same amount of energy it takes to make one new one

∞ The energy saved by recycling 1 aluminium drink can is enough to run a television for three hours

Non household rubbish i.e. batteries, mattresses electrics should be taken out of the marina to designated recycling centres – contact me if you need more info.

Jude Cleary