



MERCIA MARINA
http://www.merciamarina.co.uk/

Mercia Mercury

May 2013 Issue : 52

Marina Developments

The Promontory: At the Boaters' and Lodgers' Forum on the 9th of April, Robert Neff reported a change of plan for the Promontory Development. The poor economic situation was continuing and the Partners had therefore decided to proceed with a scaled-down version of the promontory development in the short-term. The Boardwalk would be built with shops, including the Farm Shop with indoor and outdoor seating and, importantly, a Bar/Bistro in the middle of the retail outlets. This would be stepped back to allow outdoor seating overlooking the visitor moorings. The Bar/Bistro is intended to act as a social hub until the pub is built. The revised plans had been submitted for Planning Consent and it was intended to begin building work in October with Spring 2014 the intended completion date – the same as it had been for the full development. Further details and an up-to-date image of the development will be in the next Newsletter.



economic situation was continuing and the Partners had therefore decided to proceed with a scaled-down version of the promontory development in the short-term. The Boardwalk would be built with shops, including the Farm Shop with indoor and outdoor seating and, importantly, a Bar/Bistro in the middle of the retail outlets. This would be stepped back to allow outdoor seating overlooking the visitor moorings. The Bar/Bistro is intended to act as a social hub until the pub is built. The revised plans had been submitted for Planning Consent and it was intended to begin building work in October with Spring 2014 the intended completion date – the same as it had been for the full development. Further details and an up-to-date image of the development will be in the next Newsletter.

The Boardwalk would be built with shops, including the Farm Shop with indoor and outdoor seating and, importantly, a Bar/Bistro in the middle of the retail outlets. This would be stepped back to allow outdoor seating overlooking the visitor moorings. The Bar/Bistro is intended to act as a social hub until the pub is built. The revised plans had been submitted for Planning Consent and it was intended to begin building work in October with Spring 2014 the intended completion date – the same as it had been for the full development. Further details and an up-to-date image of the development will be in the next Newsletter.

Forum Representative

Lee Bartlett had moved his boat to a different section of the Marina and would no longer be the representative for Nuthatch, Owl, Peregrine and Quail. Forum members gave their thanks to Lee for his time and commitment over the previous two years. Voting is now underway for the new Rep. Steve Evans (WB Times as Fickle) and Tony Wilkinson (NB Alicia Dawn), both of Nuthatch pontoon, and Steve Frost (WB Donovan) on Quail pontoon have said they would be happy to serve but others could also be nominated if they are willing. Moorers on the relevant pontoons should call at the Office to get a voting form or ask for it to be emailed to them. Voting ends on the 15th of May.

Art Competition 2013

The Competition closed on 15 April and there was a positive plethora of wonderful art work in all the categories. The artwork will be exhibited at the Willington Arts Festival (May 4th, 5th and 6th) and visitors will vote for what they consider the best in each category. The five category winners will each receive a bottle of champagne. The entry with the most votes will be declared the overall winner, gaining a boat trip from Mercia Marina for up to 12 passengers with refreshments.



Mercia Marina Club Card

If you are entitled to a Club Card, please go to the Office to pick up your guide (or ask for it to be emailed). Many local businesses are part of the scheme and some are finding that moorers and lodge owners don't know this. Feeling hungry? The Nadee gives 10% discount on all meals from Monday to Thursday; The Dragon gives 10% discount on all meals as does The Willows Tea Rooms and Kay's Tearoom (for eat in). And the businesses in the Marina also offer a discount - Aqua Narrowboats on Boat Hire and New Build, Midland Chandlers on all purchases and also discounts on pump out and the use of the dry dock (terms and conditions apply). Do remember to have your card with you when you want to use it and bear in mind that the discount is just for moorers and lodge owners. The Club Card Guide gives full details and all the terms of conditions for the discounts.

A guide to your Mercia Marina Club Card



Wildlife in Springtime

It may not feel much like Spring (though the weather forecasters are now talking about a heatwave in May (!), but the birds and other wildlife are busily going through their various breeding cycles at this time of year.

Common toads are breeding at the edge of the Marina at this time of year. They spend much of the rest of the year feeding on dry



land in the fields and hedgerows the other side of the perimeter road. Common toads are famous for their mass migrations back to their breeding ponds on the

first warm, damp evenings of the year. So please, drive carefully and watch for toads crossing the road. Avoid them or lift them across the road (to field or water, depending on which way they're facing!). Moorhen chicks are starting to appear. This lovely reflective picture was taken by John (nb Our Elsa) when they were down at Alre-was.

Song birds are also busy - no doubt the blue tits will be using the ex cigarette butt box outside the Shakespeare Office again! Nesting boxes have gone up around the Marina; these are monitored so please leave them undisturbed.

And the grassy ends of the small promontories around the Marina are used by breeding birds. You'll see signs asking you to avoid the area. Thank you for your help.



World Speed Record 75th Anniversary

Join the trip to the York National Railway Museum on Tuesday 9 July to see all six surviving A4s. Entry to the Museum is free - your only cost is a share of the hire coach.

Or use the coach to get to York for a great day out at the shops and other attractions and don't go near the trains at all!

For more information, ask in Still Waters Shop or get in touch with Harvey (nb Water Music on W) 07817 398593.

Don't delay - this is proving a popular trip and the list may have to be closed before too long.



Boaters' and Lodgers' Forum

The full Forum Notes are emailed out to all that ask for them. A hard copy is also held in the Office and put up in the shower blocks. If anyone would like their own hard copy, please ask in the Office.

The following were amongst many topics and issues raised and discussed in the forum:

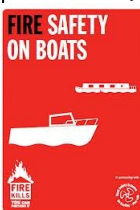
Fire Safety: There will be an evening in the Willows on 31 May with Kate McLaughlin, Community Fire Safety Officer. Nigel Hunt

will be liaising with her about the proposed talk, given his professional background and his boaters' experience. It might also be an opportunity to consider whether moorers could be Fire Wardens

(following appropriate training) and whether this would be a positive move on the Marina.

Emergency Contact Details: Moorers and Lodge Owners are being invited to give the Office emergency contact details which can be kept on file. This is a voluntary scheme but could be of use in certain situations, so if you'd like to take part, please drop by the Office and leave a name and number to go into your file.

Rubbish Bins: The rubbish bins near FB1 got full very quickly—partly because people tended to put their rubbish in the car and drop it off as they got to the exit gates. There will be a new rubbish point created at the entrance to the Compound and it's hoped this will help alleviate the problem.



Wood and Trees



The Woodland Trust project succeeded! All over the country, millions of people planted six million trees to create new Jubilee woods for the generations that follow us. At Mercia Marina, we were given a total of 250 saplings and 2 Royal Oak saplings. The 250 trees have all gone over into the South and Heritage Fields; the Royal Oak saplings have yet to have their site decided. At the moment they are being kept safe in pots. If you have an idea where one or both might go, tell the Office. It must be a site that will suit a big oak tree for a hundred or more years and it must be in the public area so that it can be visited by everyone.

A less positive side to woodland planting was raised by Robert Neff in the Boaters' and Lodge Owners' Forum. There had been reports of moorers taking live trees from the woodland areas out on the canal near the marina. Whilst this had now stopped and the area was outwith the marina's own responsibility, moorers should always remember that felling trees was unacceptable and only fallen timber should be gathered for firewood. And, with marina volunteers working with C&RT on the woodland and towpath between the Marina and Willington, the area was, at least in part, under our care.



and Lodge Owners' Forum. There had been reports of moorers taking live trees from the woodland areas out on the canal near the marina. Whilst this had now stopped and the area

Out Cruising?

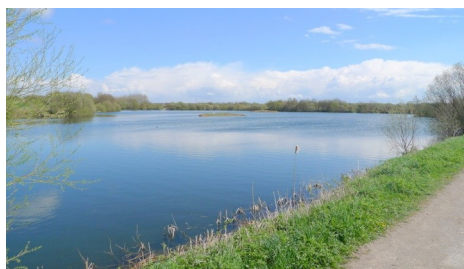
Wynne and I are currently out on *Voyager* for three weeks, along with Sue and Pete on Joe. We've been down to Stourport via Tixall and the Staffs & Worcs Canal. Then, detouring into Stourbridge overnight, we've been up the Stourton and Delph flights, stopped at Merry Hill, went through the Netherton Tunnel and into the centre of Birmingham (pic of us moored at Brindley Place). Now we're on the Birmingham and Fazeley Canal, having done the Farmer's Bridge and Aston Flights. We are moored at Curdworth Bottom Lock for a couple of nights (see pic at end). A lot of this trip was virgin territory for us. Thanks to one or two Mercia Moorers and the Canal World Discussion Forum, we had good



advice on moorings and other important things.

But such advice does go out of date quite quickly. So I'm going to put a book in the Office with our names and route and dates in it. And maybe other, who are also heading out for a few weeks, would do the same. Then, if you are planning a trip to uncharted waters, C&RT service points and towpaths, you could take a look at the log book and see if anyone has been that way recently who could give you advice on shops, moorings, pubs, etc. Perhaps this would also be of use to Aqua and Shakespear with their holiday boats. Of course our wishes are different - some want pubs, some want to eat out, some want to be in the middle of it, some want to be in the middle of nowhere, some self-cater. But it's a start and advice should always be given on an easy 'take it or leave it' basis.

So, anyone wanting our collective findings on a sort of Black Country ring with a bit of Stourport thrown in, just ask!



Life after Life

We are privileged to have some really great friends of mine coming to Willington. I am referring to the evening of Mediumship at the Village Hall on July 6th 2013. To allay any misconceptions and fears you might have of these events, I would like to explain how I came to know these lovely people.

About 11 years ago shortly after my mother had passed away, my father wanted to know that she was ok? He wanted to visit a Spiritualist church. I was not sure, as his son I wanted to protect my father, and so I went myself. When you think of these events you may, like I did, think they are dark and un-natural and you may even be apprehensive? Let me assure you they are carried out with the utmost sensitivity and respect.

The idea is not to embarrass you but to bring you close to your loved ones again and all the love and peace that they would wish to give you. My wife, Sylvia and I were sceptical at first and only after I had encouraged her to go along did she realise the comfort and peace you can find, having received a message from her father who had died some 20 years earlier.

I must say it is not for everyone and this might be the only time you ever consider going to one of these events, but I urge you to open your hearts and minds to perhaps further your knowledge of what life has in store for all of us eventually. I always wanted to know the answers to those deep questions:

- * Why are we here?
- * What is life all about?
- * Do we live on ... in some other form?
- * What happens after I die?

This is not a religious meeting and you will not be asked to pray, just to come along and be happy and open your mind to your loved ones.

Karen and Heather are very experienced Mediums, who hold certification and awards from the legally recognised Spiritualist religion, which is based on science. They have years of experience in this field, both privately and in serving in Theatres, Halls, Spiritualist and Christian Spiritualist Churches up and down the country. Not everyone will be fortunate enough to receive a message due to time constraints but if you do not, just enjoy listening to the evidence given and the 'Yes', 'No' and 'Maybe' responses of other recipients and perhaps we could have another meeting in the future.

Your support would be much appreciated to bring a warm Willington welcome to David, Karen and Heather.

The evening will be filled with love, joy and expectation for what might just help you live your life in a happier, more understanding and less fearful way.

We look forward to seeing all your smiling faces there

Love and Light

Gary and Sylvia nb Poppy

Willington Village Hall, Twyford Road, Willington, Derbyshire. DE65 6DE

Life after Life

Bringing what many believe constitutes evidence of survival after the experiences of a Physical life.

A SPECIAL EVENING OF MEDIUMSHIP

With Experienced Spiritual Mediums
Karen Haycock & Heather K Haywood

This evening includes Refreshments & Raffle
Donations going to Willington Hall
& Local Wild Life Volunteers

Doors open 7pm

Starting prompt at
7:30pm - 10pm

On **Saturday**
6th July 2013

An intriguing, interesting and thought provoking evening bringing the Love, Thought and Memories of those Friends and Loved Ones that have gone before us and make their transition to the World of Spirit.



Entrance Tickets
£5 each

Tickets now available from the Mercia Marina Office and the Stillwaters Shop or you can book tickets by Telephoning 07541 830658
Entrance Tickets may be available on the door; subject to availability.

No admissions after 7:30pm